



FAMILY SERVICES

Floor Plan/Evacuation Plan

All applicant homes must provide a floor plan/evacuation plan. This plan must provide a visual layout of the home that is an accurate representation (i.e. dimensions must be realistic). All rooms must be defined and living spaces and bedrooms must show the dimensions of the room. Beds must be identified, as well as their occupants. Be sure to draw in the bathrooms and closets, as well. Please use a floor plan of your home to indicate all of the required elements. If you do not have a floor plan of your home, you may draw a floor plan on the provided graph paper. You can also use the free tools online at <http://www.floorplanner.com/>.

Checklist of Required Items to Label:






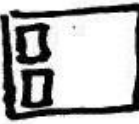
- Family Name with Home Address and Phone Number should be on the floor plan.
- All rooms/living spaces/outdoor spaces (including closets, bathrooms, laundry rooms, mud rooms, garage, patio, etc.) labeled with room assignments.
- All bedrooms/living spaces (including, laundry rooms, mud rooms, etc.) labeled with room dimensions. Closets, bathrooms and outdoor spaces do not require dimensions.
- A meeting place for a fire emergency must be designated.
- A meeting place for a tornado/weather emergency must be designated.
- At least 2 Fire Evacuation routes must be drawn. These cannot include windows (although windows should be drawn as additional escape routes). The 2 escape routes must not be blocked and must lead to different, distant, parts of the exterior of the home. These escape routes must not lead through a kitchen or hazardous area, must not lead to doors that may only be opened with a key, and may not lead to a pool area.
- The route to the tornado/weather emergency meeting place must be designated.
- A fire extinguisher must be located in the kitchen and there must be a fire extinguisher on each level of the home. These should be indicated on the floor plan.
- Smoke detectors must be located in hallways or open areas outside of sleeping rooms and there must be a smoke detector located on each level of the home. These should be indicated on the floor plan.

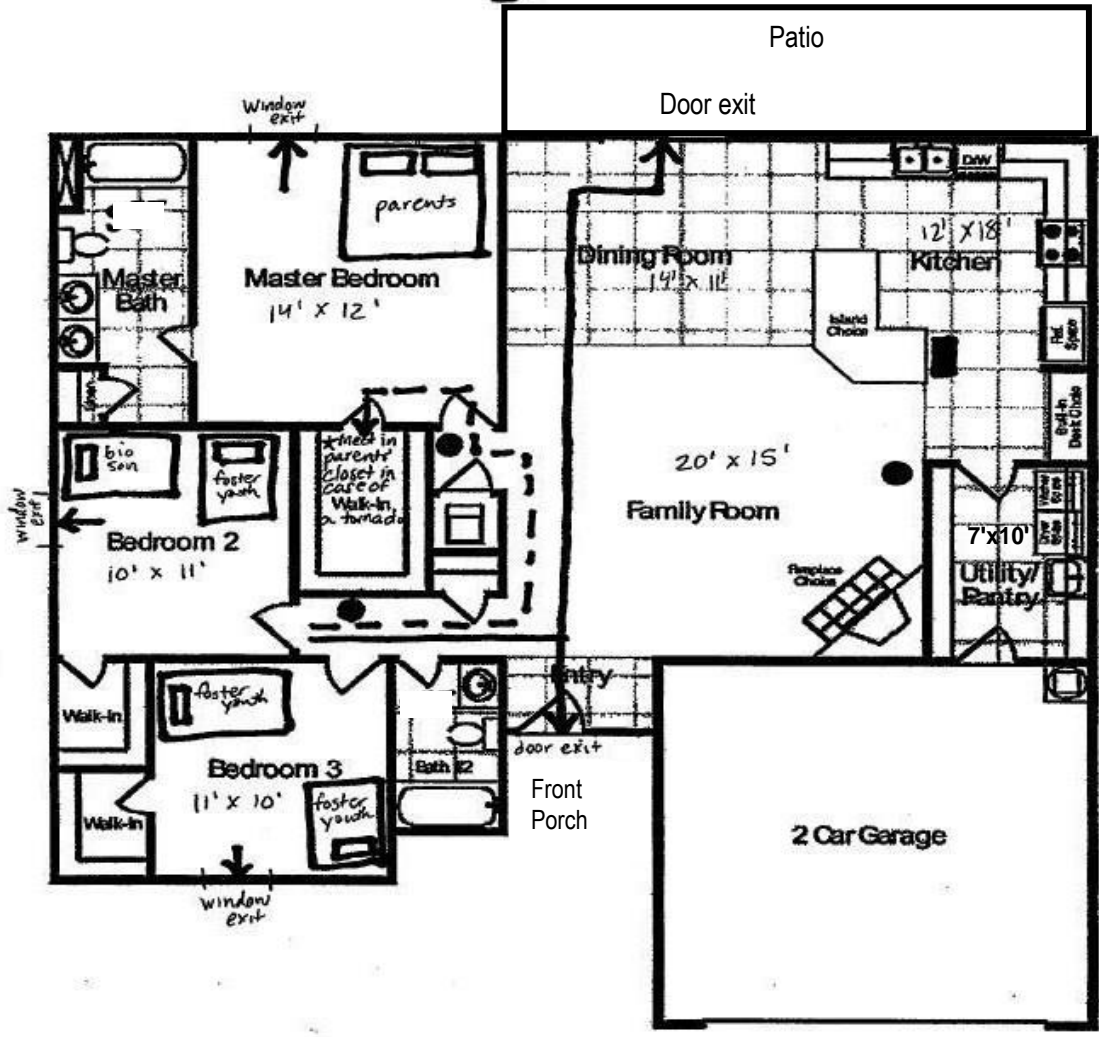
The Smith Family Home

123 Main Street
214-555-1234

Dallas, TX 12345

Legend

-  Fire escape route
-  Tornado shelter route
-  smoke detector
-  fire extinguisher
-  single bed
-  double bed



Mail
* Meet at the mail box in case of a fire. Do not go in the street.

Family Name: _____

Address: _____

Phone: _____

