

# Preparing Your Home

Foster and Adoptive Parents are required to adhere to guidelines established by the State of Texas and CK Family Services. In order to comply with these requirements, some adjustments to the family's home will likely be required.

In preparation for your homestudy, please review the information within this document. We have included information about:

1. Acceptable locking measures for chemicals and medications
2. Fire Extinguisher Inspections
3. Properly securing pools, hot tubs and bodies of water.
4. Please also carefully review the Environmental Health Checklist, Fire Safety Evaluation Checklist and CKFS Home Compliance Checklist.

If you have any questions or concerns, please contact your Family Development Specialist.

## Locks for Chemicals and Medications

Minimum Standards and CK Family Services policy require that all medications be locked and all chemicals must be safely stored. Please review these guidelines, and see the following page for additional clarification.

- All medications must be locked. Families may use cabinets with a lock of some sort, including magnetic tot locks, locking bank bags, locking tool/tackle boxes, locking file cabinets, etc.
- Oral medications must be separated from topical medications. If they are stored in the same cabinet/container, they should be clearly marked and separation should be easily observed. Families are to have methods for locking and separating medications ready at the time of the homestudy.
- All refrigerated medications must be locked and families are to have a method for locking refrigerated medications at the time of the homestudy.
- All controlled substances must be double locked and families are to have a method for double locking controlled substances at the time of the homestudy.
- Topical medications and hygiene supplies, such as diaper cream, baby powder, etc. must also be locked and inaccessible to children. Many families keep these items on the changing table and/or in the diaper bag. Please have these items secured by the time of the homestudy.
- Please see the resources on the following page for additional ideas and clarification.

Minimum Standards and CK Family Services policy require that all household chemicals and cleaners, harmful substances, etc. be out of the reach of children.

- For families that will accept a child for placement that is **age 8 and older**, CKFS defines “out of reach” to mean that these items are locked.
- For families that will only accept children for placement that are **age 7 and younger**, CKFS defines “out of reach” to mean that these items are placed in a high location.
- Families may use cabinets with a lock of some sort, including magnetic tot locks, locking tool/tackle boxes, locking file cabinets, etc.
- Child safety latches that are simply a deterrent, do not qualify as a lock, nor will they permit items to be kept at a lower location, even if the family will only accept younger children.
- Please see the resources on the following page for additional ideas and clarification.

## Acceptable Locks for Chemicals and Medications



Locks that use keys are a great way to secure chemicals and medications. Combination locks can also work very well. Notice, we prefer not to have heavy chains draped through handles—we want the home to feel as normal as possible (even with completing extra measures such as locking chemicals and medications).



Magnetic Tot Locks (multiple brands) are a great locking solution as they are invisible behind the cabinet, but the cabinet cannot be opened without the magnetic key.

## These Child Safety Devices DO NOT Qualify as Locks for Chemicals and Medications



These safety devices are useful, but they will not count as a lock for any required items.



## Fire Extinguishers

- Each home must maintain an operable five-pound dry chemical fire extinguisher on each level of the home.
- A five-pound fire extinguisher must always be available in the kitchen.
- If the Fire Marshal requires the fire extinguisher to be located outside of the kitchen, then the family must meet both requirements.
- Fire extinguishers must be replaced after each use and checked for proper weight at least once a year.
  - Unless the date that the fire extinguisher was inspected for proper weight is specifically noted, even new fire extinguishers must be inspected.
- Some resources for obtaining fire extinguisher inspections include, but are not limited to:

Name	Cost
Maner Fire Equipment Ditto Avenue, Arlington, TX 76010 www.manerfire.com      817-261-5894	211      \$15.00
Fort Worth Fire Extinguisher Co. Ludelle St. Unit 312, Fort Worth, TX 76105 http://fwfext.com/      817-534-2341	2400
Kimbrough Fire Extinguisher Company 1203 S. 2nd Avenue, Mansfield, TX 76063 817-261-7427	\$9.00
All-Star Fire Extinguisher Service http://allstarfireextinguisher.com/      469-235-3362 <b>Cities Served:</b> Allen, Anna, Arlington, Burleson, Carrollton, Dallas, Denton, DeSoto, Duncanville, Euless, Farmers Branch, Flower Mound, Forney, Fort Worth, Frisco, Garland, Grand Prairie, Grapevine, Heath, Irving, Keller, Lancaster, Lewisville, Mansfield, McKinney, Melissa, Mesquite, Midlothian, North Richland Hills, Plano, Red Oak, Richardson, Rowlett, Seagoville, Terrell, The Colony, Van Alstyne, Waxahachie, Weatherford, White Settlement, Wylie	
Richardson Fire & Equipment http://richardsonfireequipment.com/      972-699-3473 <b>Cities Served:</b> Addison, Aledo, Allen, Anna, Archer City, Arlington, Azle, Bonham, Bowie, Boyd, Breckenridge, Bridgeport, Burkburnett, Carrollton, Clarksville, Cleburne, Coppell, Corsicana, Dallas, Decatur, Denison, Denton, Duncanville, Ennis, Fate, Flower Mound, Fort Worth, Frisco, Gainesville, Garland, Graham, Granbury, Grand Prairie, Greenville, Haltom City, Henrietta, Hillsboro, Hurst, Irving, Jacksboro, Keller, Lewisville, Mansfield, McKinney, Melissa, Meridian, Mesquite, Mineral Wells, Murphy, Nocona, Paradise, Paris, Plano, Pottsboro, Richardson, Rockwall, Rowlett, Royse City, Sachse, Sherman, Stephenville, Vernon, Waxahachie, Weatherford, Whitesboro, Wylie	\$5 if you take your extinguisher to their office  Must be Metal Extinguisher
Fire Shield Services http://fireshieldservices.com/      972.724.7800 <b>Cities Served:</b> Addison, Allen, Anna, Argyle, Arlington, Balch Springs, Bartonville, Bedford, Burleson, Carrollton, Cedar Hill, Colleyville, Dallas, Denton, Desoto, Duncanville, Euless, Farmers Branch, Flower Mound, Forney, Fort Worth, Frisco, Garland, Grand Prairie, Grapevine, Greenville, Highland Park, Highland Village, Hurst, Irving, Keller, Lake Dallas, Lancaster, Las Colinas, Lewisville, Little Elm, Mansfield, McKinney, Melissa, Mesquite, North Richland Hills, Oak Cliff, Plano, Red Oak, Richardson, Roanoke, Rowlett, Sachse, Seagoville, Southlake, Terrell, The Colony, Waxahachie, Weatherford, Westlake, Wylie	\$8.00 if you take your extinguisher to their office

## Pool Safety Helpful Hints

The following guidelines apply to ALL in-ground pools and hot-tubs, as well as above-ground pools. Above-ground hot tubs must meet these requirements and also have a locking cover in place when not in use. Bodies of water are not subject to these rules, however, CK Family Services will develop a safety plan with your family according to the type and size of body of water, barriers to keep child from the body of water, and ages of children to be placed in your home.

- A pool must have a fence that is at least 4 feet tall.
- All gates leading into the pool area must be self-closing (spring-loaded) and self-latching and locked when not in use.
- All doors leading into the pool area must have an additional lock that is high and out of the reach of a child over age 10.
- In the examples on the next page, see how this is clarified (look for the diagram that seems most like your yard):

### Example #1

- Fence exclusively around pool. Gate needs to be self-closing, self-latching, and locked when not in use.

### Example #2

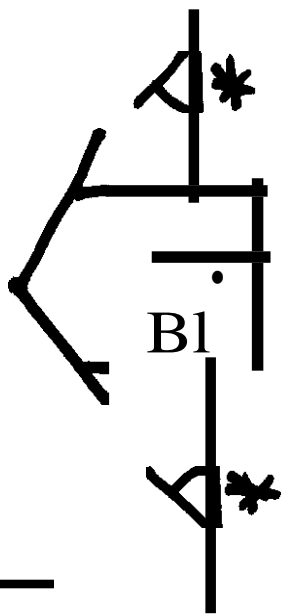
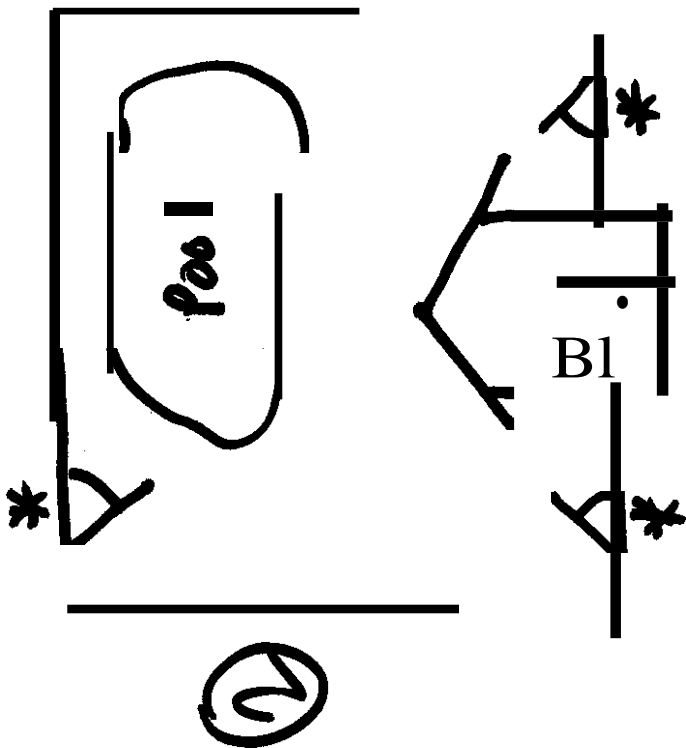
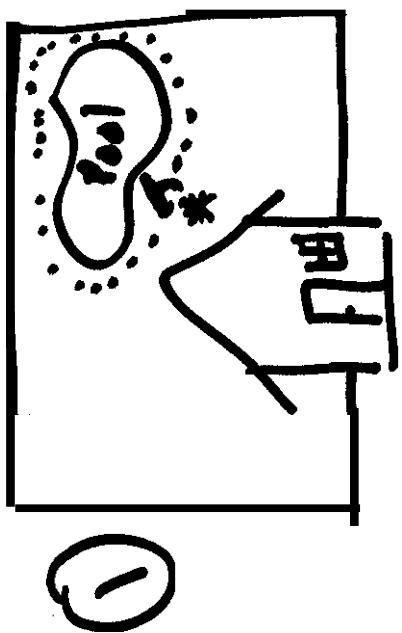
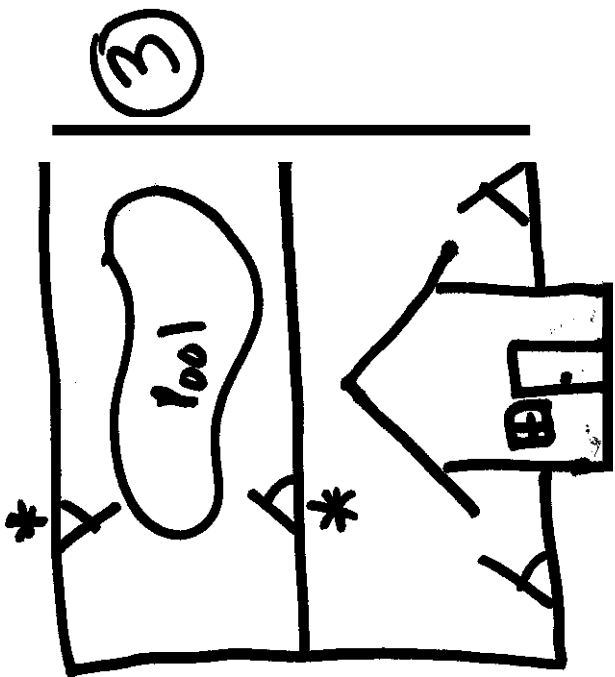
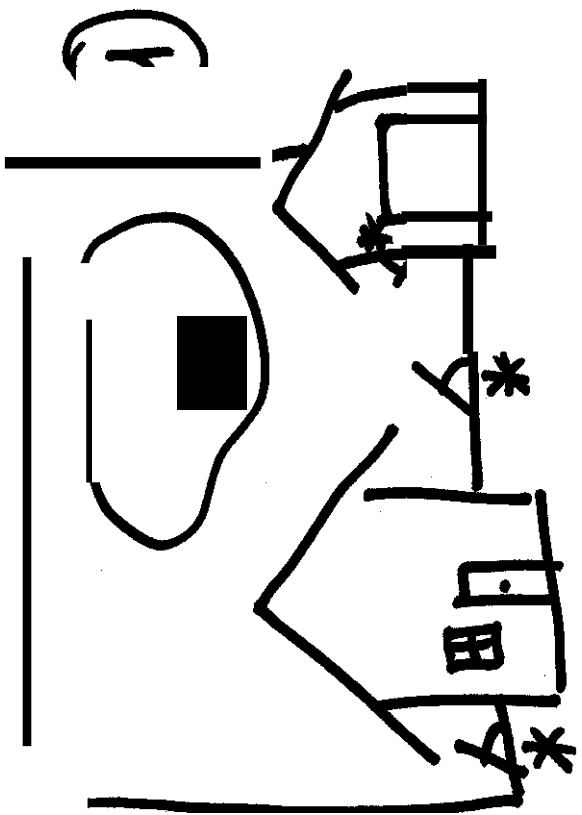
- Pool is within the backyard fence. Gates need to be self-closing, self-latching, and locked when not in use.
- All doors leading into the pool area must have an additional lock that is high and out of the reach of a child under age 10.

### Example #3

- Fence exclusively around pool. Gates need to be self-closing, self-latching, and locked when not in use.

### Example #4

- Pool is within the backyard fence. Gates need to be self-closing, self-latching, and locked when not in use.
- All doors leading into the pool area must have an additional lock that is high and out of the reach of a child under age 10.
  - This includes doors leading from the detached garage (or any other structure) into the pool area.
- Pool Pumps & Equipment must be secured and children may not gain access. Licensing defines this as having a pool pump house that completely encloses the equipment, or a fence enclosure that is reasonable to prevent access by children. This is not required to be locked and there is not a required height of fencing, so our expectation is that the fencing be approximately 3 feet high or greater.



## Pool Gate Latches that *CAN* be Self-Latching



Closures common to wood privacy fences are more often self-latching as the latch closes over the arm when the gate swings shut.

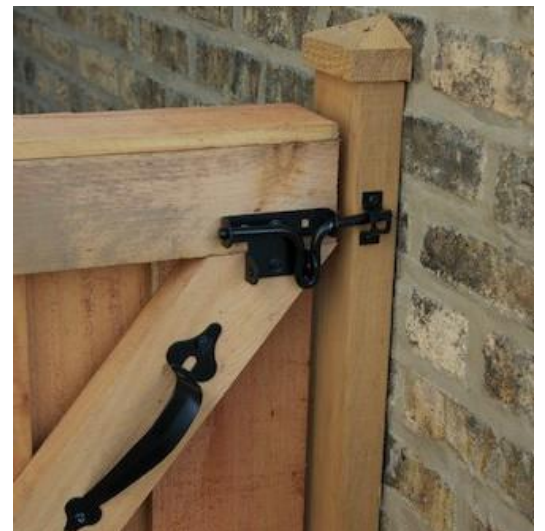


## Pool Gate Latches that *CANNOT* be Self-Latching

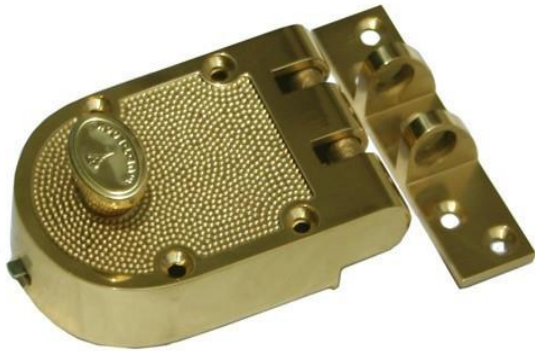


Closures which require one piece to slide and turn over another typically are not self-latching.

Typical chain link fence gate closures do not self-latch because the latch pivots opposite the direction of the swinging gate.



# Examples of Appropriate High Locks for Doors Leading to Pool Areas



Not Necessary →

